
CHAPTER 25: HOSPITALS SERVICES

APPENDIX A: FORMS AND LINKS**PAGE(S) 2**

FORMS AND LINKS

The hospital fee schedules can be obtained from the Louisiana Medicaid web site at:

http://www.lamedicaid.com/provweb1/fee_schedules/feeschedulesindex.htm.

An updated list of the ambulatory surgery codes can be obtained from the Louisiana Medicaid web site at:

http://www.lamedicaid.com/provweb1/fee_schedules/Out_Amb_FS_non-Rural_non-State.pdf

http://www.lamedicaid.com/provweb1/fee_schedules/Out_Amb_FS_Rural_State.pdf

Other hospital related forms can be obtained from the Louisiana Medicaid web site at:

<http://www.lamedicaid.com/provweb1/Forms/forms.htm>

The Short Cervix Guide is included in this appendix.

The most recent instructions for completing the UB 04 form along with samples of UB 04 claim forms for hospital services routine billing are located on the home page of the Louisiana Medicaid website. The billing instructions and examples may also be accessed by using the below hyperlink.

http://www.lamedicaid.com/provweb1/billing_information/UB04_Hospitals_NDC.pdf

CHAPTER 25: HOSPITALS SERVICES

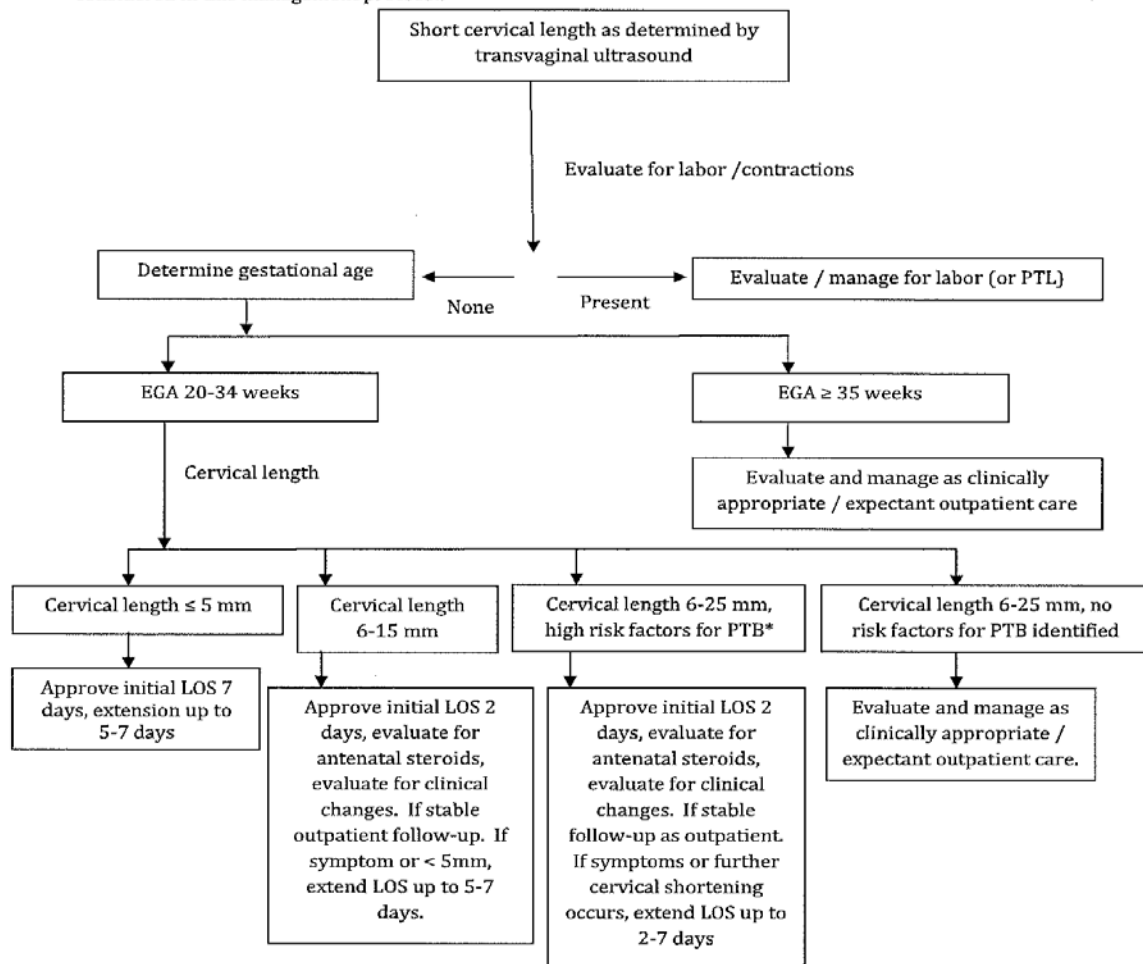
APPENDIX A: FORMS AND LINKS

PAGE(S) 2

Short Cervix Guide

Short Cervical Length in Pregnancy

A shortened cervical length, as measured by transvaginal ultrasound, has been associated with increased risk of preterm birth in some pregnancies. However, there is no clear published guidance on management of these pregnancies, or that intervention results in improved outcomes. Use of antenatal steroids has shown benefit in appropriately selected patients. The following protocol is suggested as a guide for selection of patients for inpatient evaluation / management. It is not intended to be a strict protocol and should be adapted as clinical conditions warrant, as provided by the patient's provider. Patients with cervical lengths of > 25 mm (20-37 weeks gestation) are generally considered to be at low risk for preterm birth and are not considered in this management protocol.



*Risk factors include, but not limited to, multiple gestation, prior preterm birth / labor, incompetent cervix, FFN status.

Revised 08/24/10